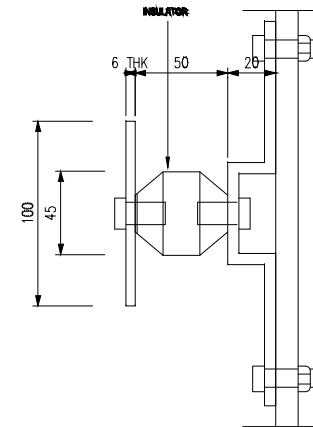
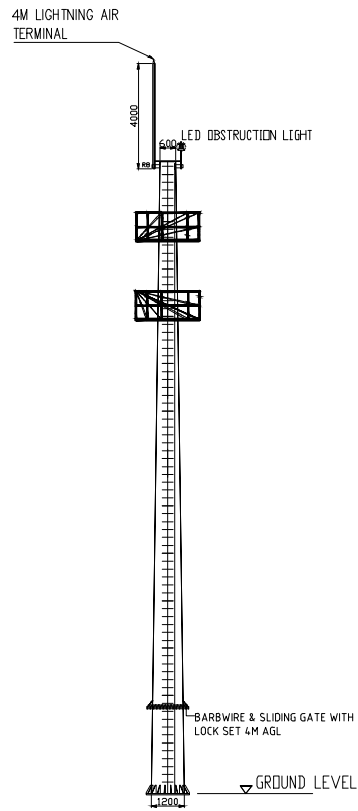


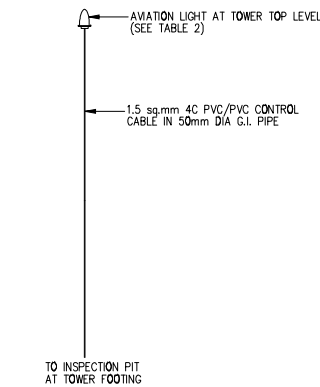
FRONT VIEW  
GROUNDING BUSBAR



ELEVATION



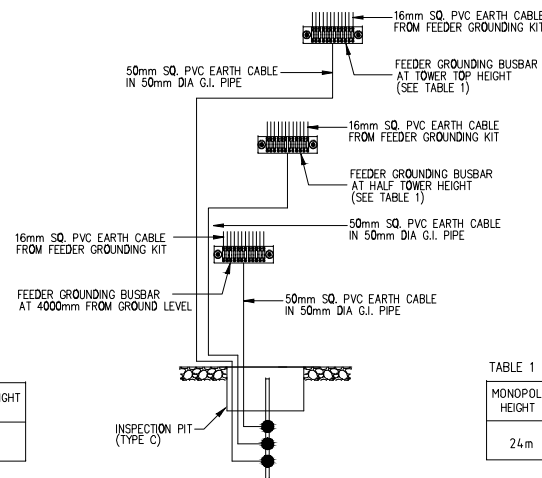
TYPICAL MONOPOLE ELEVATION



AVIATION LIGHT SCHEMATIC

TABLE 2 : LOCATION OF AVIATION LIGHT

MONOPOLE HEIGHT	AT MONOPOLE TOP (1 NUMBER)	AT HALF MONOPOLE HEIGHT (2 NUMBERS)
24m	24m	N/A



FEEDER GROUNDING BUSBAR SCHEMATIC

TABLE 1 : LOCATION OF MAIN GROUNDING BUSBAR

MONOPOLE HEIGHT	AT BOTTOM OF MONOPOLE	AT HALF MONOPOLE HEIGHT	AT MONOPOLE TOP HEIGHT
24m	4m	12m	24m

**NOTE:**

NOTES:

- AIR TERMINAL SHALL COVERED 45 DEGREE OF THE AREA FROM TOP OF TERMINAL
- IN ORDER TO REDUCE EARTHING RESISTANCE READING BELOW 5 Ohm, UTILISATION OF COMPOUND AS A MEDIUM IS ACCEPTABLE.

INVITATION REFERENCE NO:  
MCMC/RDD/PDD(4)/T3\_Extn(P2)/  
TCA/12/14(12)

**PROJECT TITLE:**

TIME 3 - EXTENSION  
(24M MONOPOLE - SPOKE SITE)

**DRAWING TITLE:**

DRAWING 4:  
PLAN AND SECTIONS DETAILS OF  
EARTHING SYSTEM

**DATE:**

DEC 2014

**SCALE:**

1 : 50