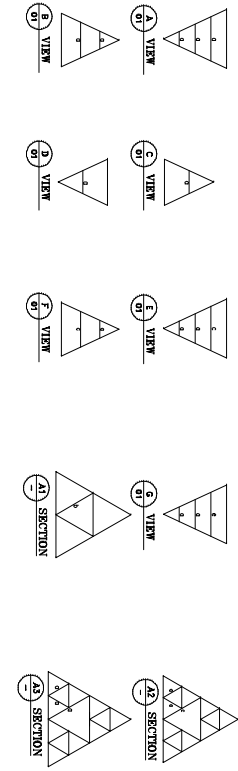
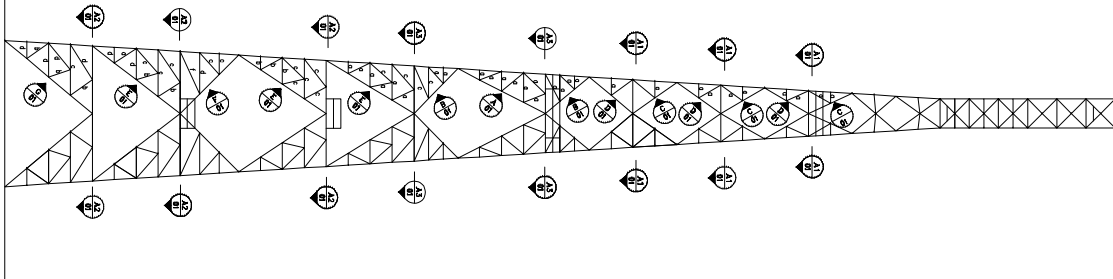


PANEL	22	21	20	19	18	17	16	15	14	13	12	11	10	9	8	7	6	5	4	3	2	1
LEGS	V 150x150x15 H	V 150x150x12 H			V 130x130x12 H				V 130x130x9 H				V 100x100x10 H				V 90x90x7					
DIAGONALS	L 65x65x5	L 65x65x5			L 65x65x5				L 50x50x5				L 50x50x5				L 50x50x5					
HORIZONTALS		L 65x65x5			L 50x50x5				L 50x50x5				L 50x50x5									
SUBHORIZONTALS																	L 50x50x5					
BOLTS FOR LEGS	10 M20				5 M20				2 M16				6 M20				4 M20					
BOLTS FOR DIAGONALS									2 M16								1 M16					
BOLTS FOR HORIZONTALS	2 M16	2 M16			2 M16	2 M16			2 M16	2 M16			2 M16									1 M16
FACE WIDTH (m)	0.6				1.80	1.80			4.125	3.100			2.8	1.400	0.400	0.400	0.400	0.400	0.400	0.400	0.400	0.400
TOWER ELEVATION (m)	0.6	0.6	1.20	1.80	2.40	3.00	3.60	4.20	4.80	5.40	6.00	6.60	7.20	7.80	8.40	9.00	9.60	10.20	10.80	11.40	12.00	12.60

76m TOWER ELEVATION



NOTE:-  
1. 1-M16 BOLT FOR REMOVALS.  
2. LEGS:-

MEMBERS MATERIAL	
1	L 50x50x5
2	L 65x65x5
3	L 65x65x5
4	L 65x65x5
5	L 50x50x5

NOTE:

---

INVITATION REFERENCE NO:  
MCMC/RDD/PDD(4)/T3\_Extn(P2)/  
TCA/12/14(12)

---

PROJECT TITLE:  
TIME 3 - EXTENSION

---

DRAWING TITLE:  
DRAWING 15:  
GREENFIELD SITE 76m  
LD TOWER

---

DATE: DEC 2014      SCALE: 1 : 125