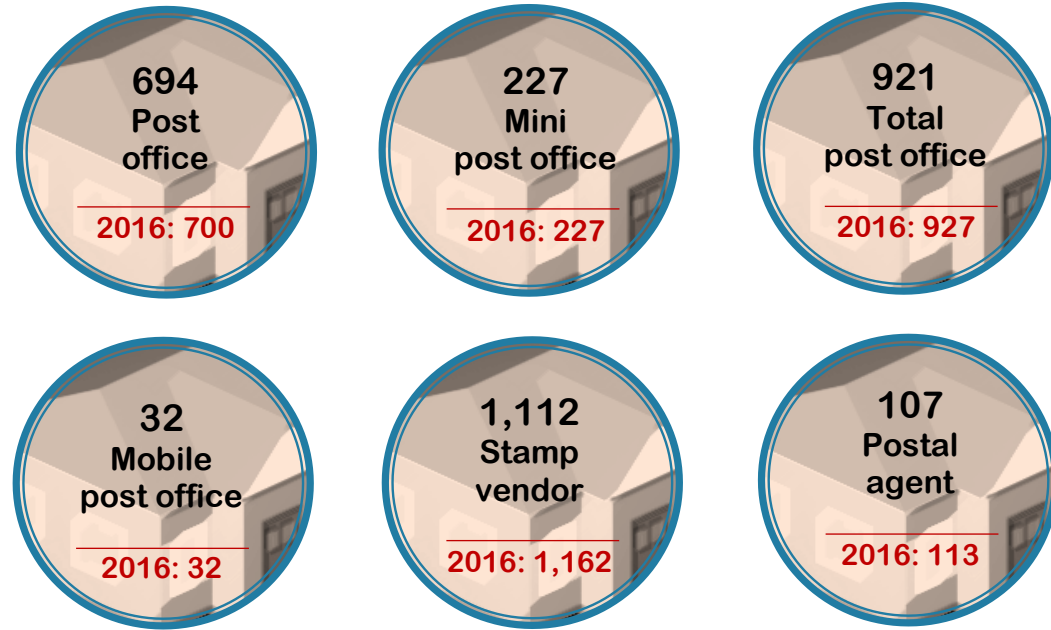
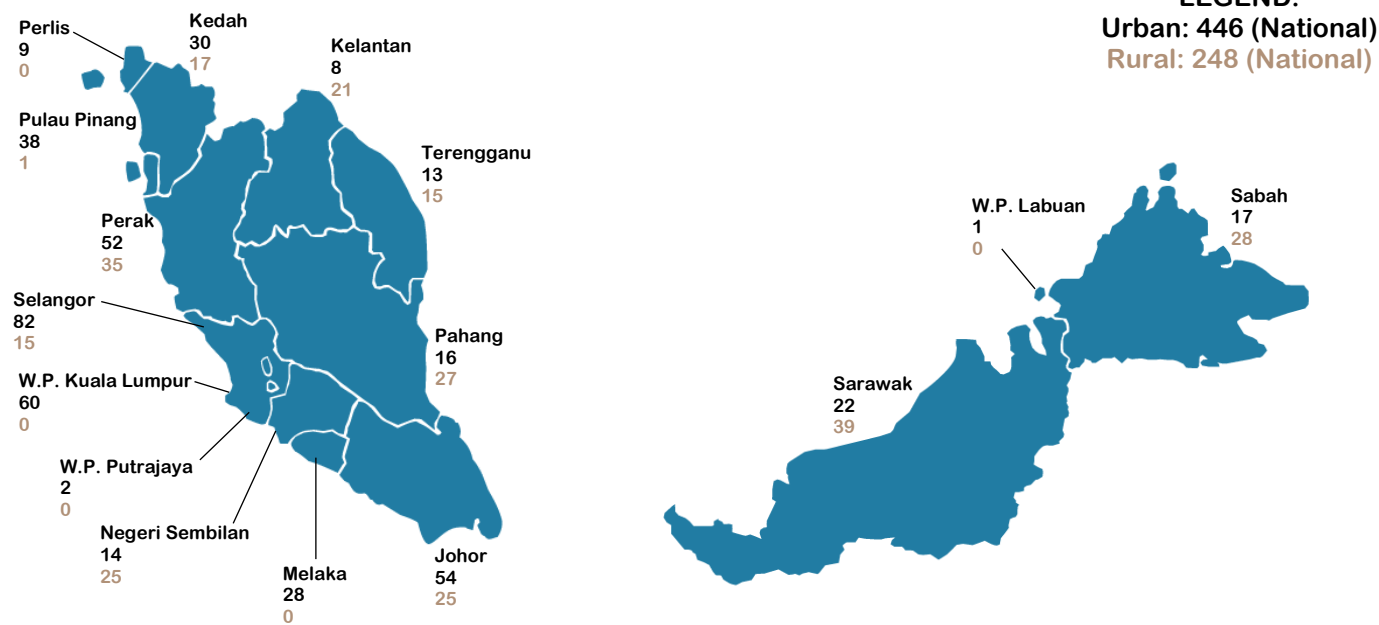


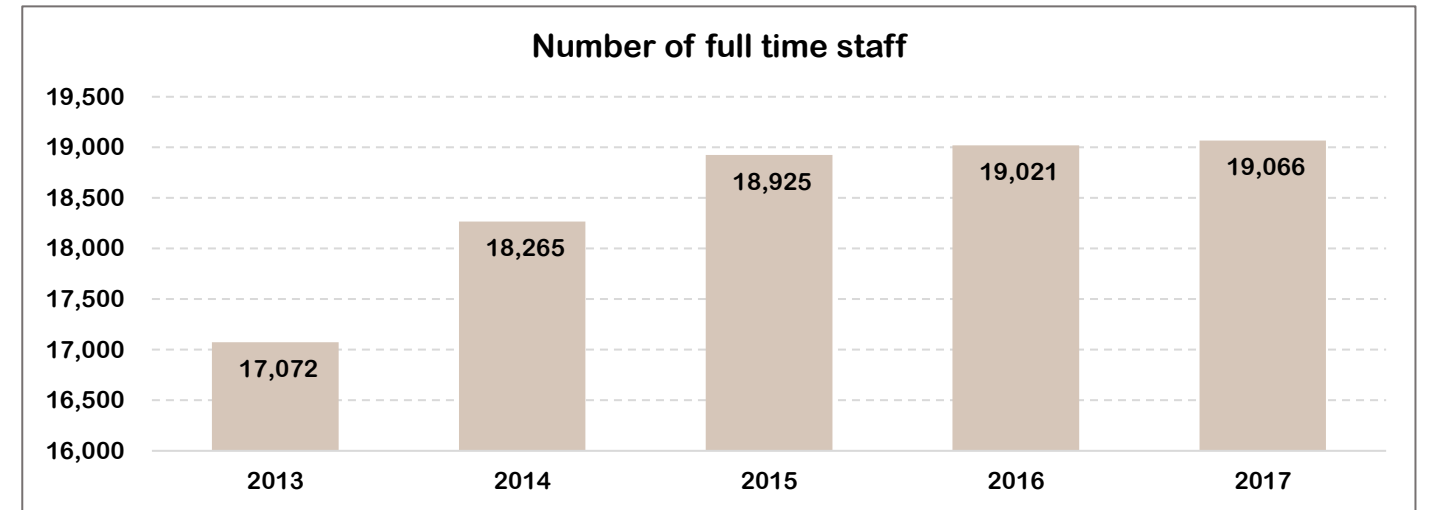
POSTAL INFRASTRUCTURE



NUMBER OF POST OFFICE BY STATE



POSTAL EMPLOYMENT

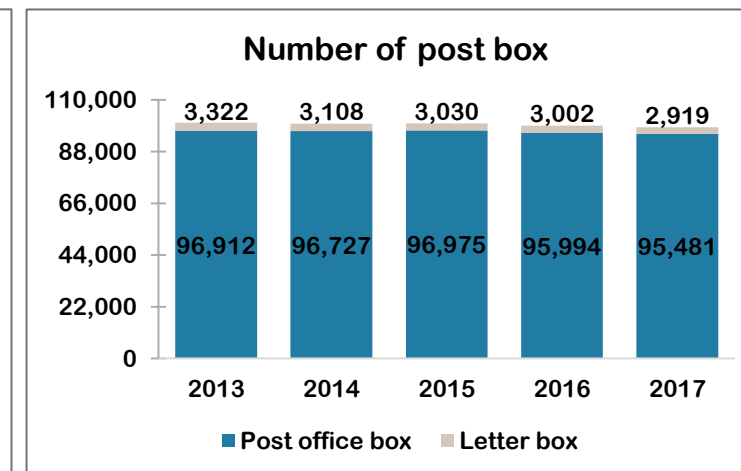
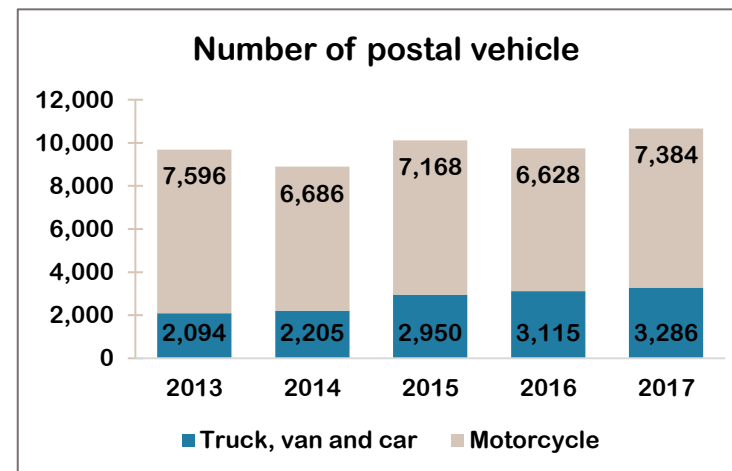


POSTAL TRAFFIC

Services	Number of letter post item ('000)		Number of registered item ('000)	
	2016	2017	2016	2017
Domestic	808,208.8	738,135.2	19,115.0	21,715.0
International issued	35,761.5	29,646.3	5,198.0	8,283.2
International received	11,880.2	11,168.6	1,179.0	994.3

Services	Number of ordinary parcel ('000)		Number of insured parcel	
	2016	2017	2016	2017
Domestic	944.8	1,040.3	93	61
International issued	161.0	169.8	15	15
International received	186.9	170.3	N/A	N/A

POSTAL VEHICLE AND POST BOX





2017

COURIER SERVICE Facts & Figures

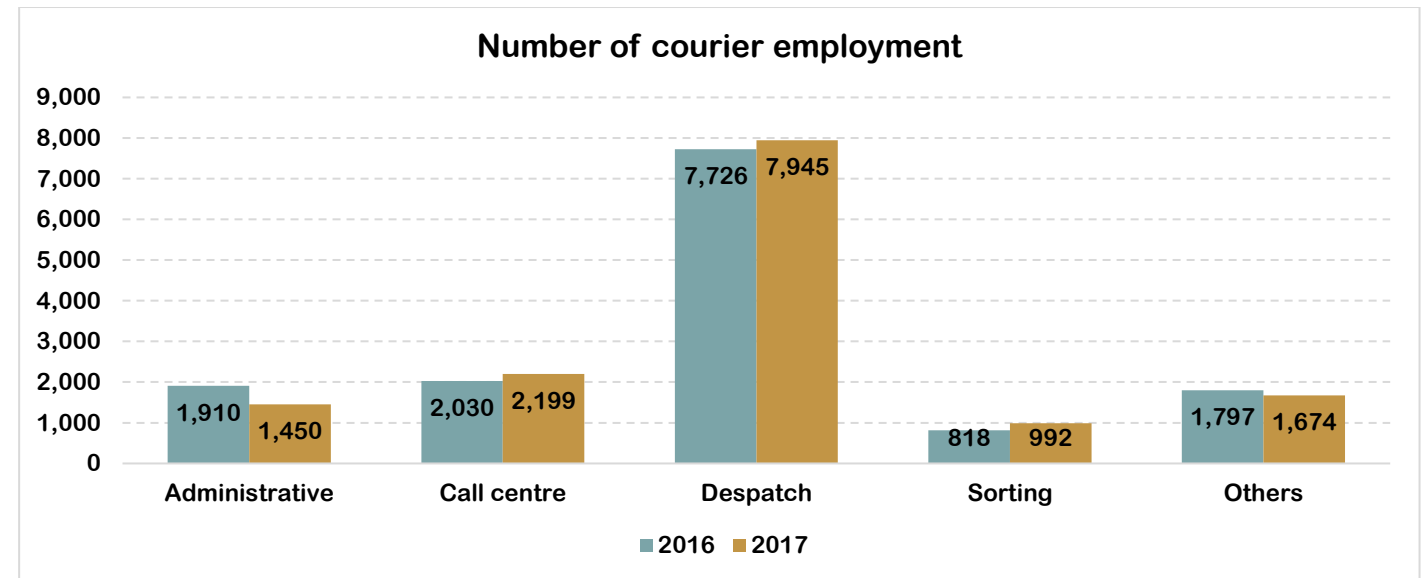
COURIER INFRASTRUCTURE



COURIER INFRASTRUCTURE BY STATE

State	Hubs	Affiliates	Branches	Agents	Gateways	Drop-in-centre	Franchise	Others
Johor	2	6	41	25	1	14	9	12
Kedah	0	2	16	12	0	10	3	3
Kelantan	0	1	11	22	0	16	2	1
Melaka	0	3	13	5	0	3	1	4
Negeri Sembilan	0	2	18	6	0	6	1	3
Pahang	1	2	21	26	0	7	3	1
Perak	1	6	29	15	0	14	8	4
Perlis	0	0	4	3	0	1	0	1
Pulau Pinang	2	2	20	2	3	9	0	6
Sabah	0	3	23	43	0	10	0	2
Sarawak	0	6	23	52	1	10	4	0
Selangor	11	8	63	67	5	203	3	55
Terengganu	0	3	11	11	0	3	4	0
W.P. Kuala Lumpur	1	3	20	32	0	144	1	36
W.P. Labuan	0	0	4	0	0	0	0	0
W.P. Putrajaya	0	0	5	1	0	4	0	1

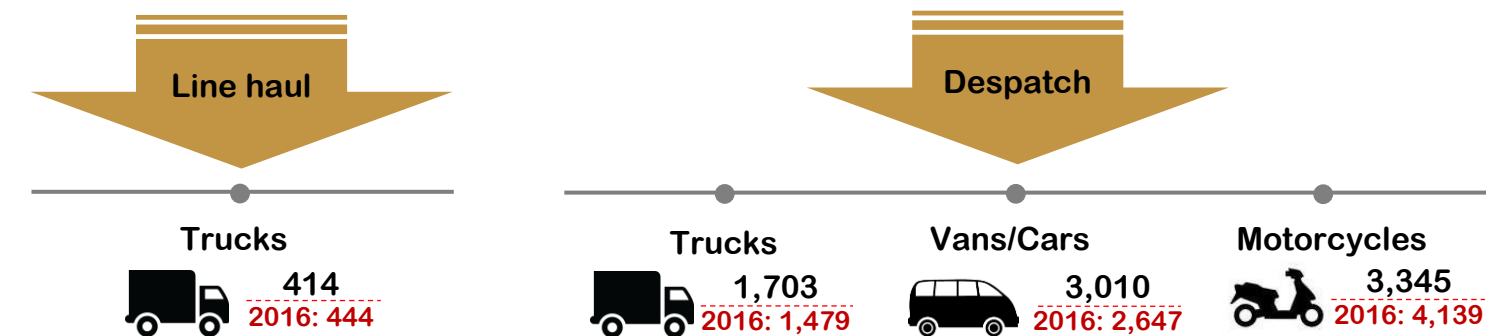
COURIER EMPLOYMENT



COURIER TRAFFIC

Service	Number of document ('000)		Number of parcel ('000)		Others ('000)	
	2016	2017	2016	2017	2016	2017
Domestic	47,197.8	53,466.9	24,660.9	35,230.2	34,638.8	22,119.2
International	2,592.1	2,612.9	4,149.6	4,915.9	448.1	303.3

COURIER VEHICLE



- NOTE:**
- Courier statistics were collected from top 10 courier companies in terms of revenue through a survey canvassed by MCMC.
 - Drop-in-centre in Courier infrastructure for 2016 is included in Others.
 - Others in Courier infrastructure includes service centre, kiosk, etc.
 - Others in Courier employment includes operation centre, sales, financial and customer service.
 - Others in Courier traffic includes non-priority mail, walk-in courier, prepaid and post express.
 - Revised figures are underlined.

For further inquiries, please contact Statistics Department MCMC at statistics@cmc.gov.my