

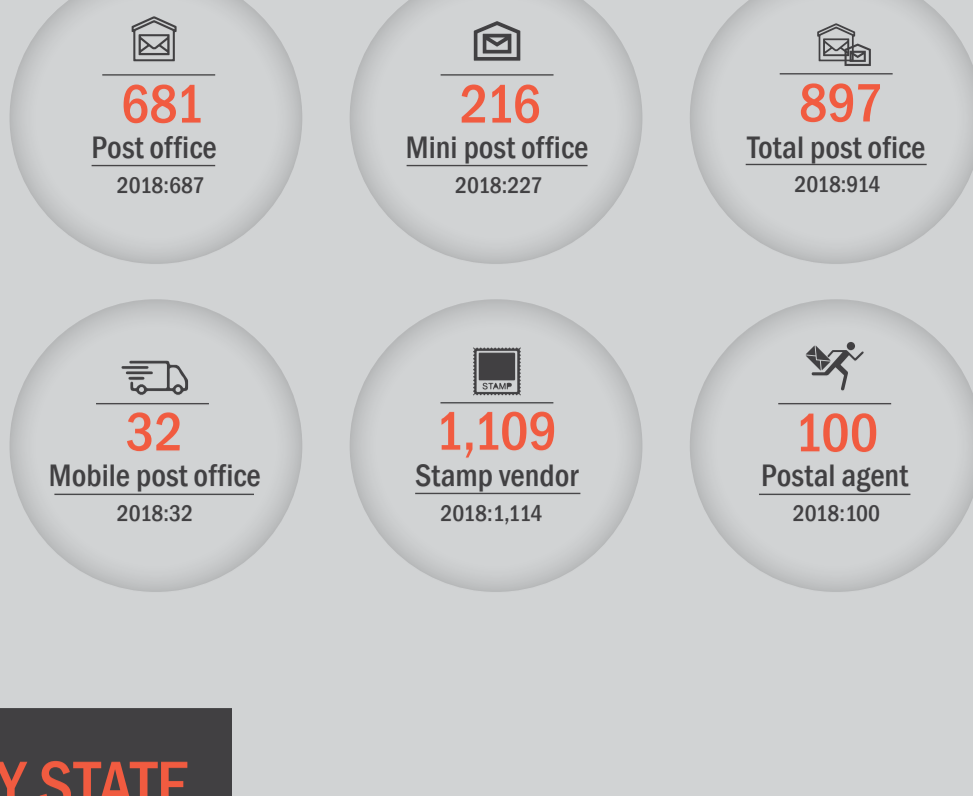
POSTAL AND COURIER

Facts & Figures

1H 2019

POSTAL INFRASTRUCTURE

Number of postal infrastructure



POST OFFICE BY STATE



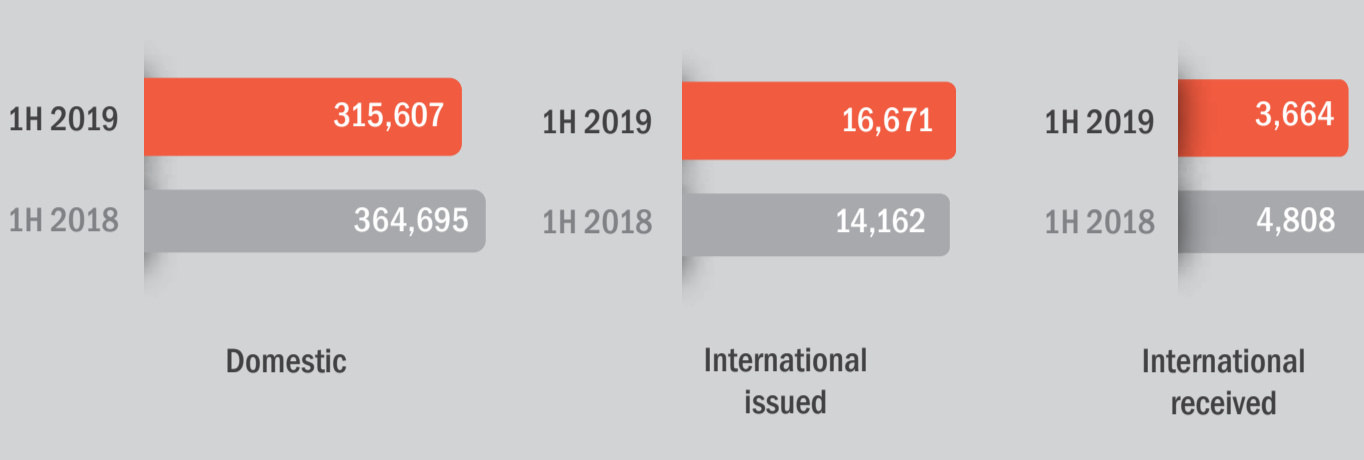
POSTAL EMPLOYMENT

Number of full time staff



POSTAL TRAFFIC

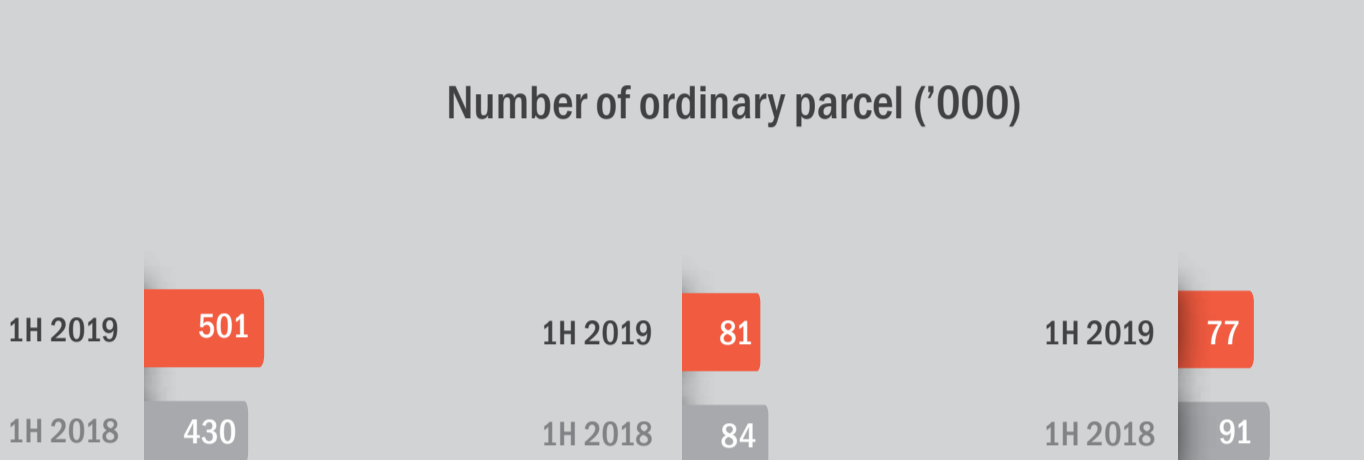
Number of letter post item ('000)



Number of registered item ('000)



Number of ordinary parcel ('000)



POSTAL VEHICLE



POST BOX

Number of post office box



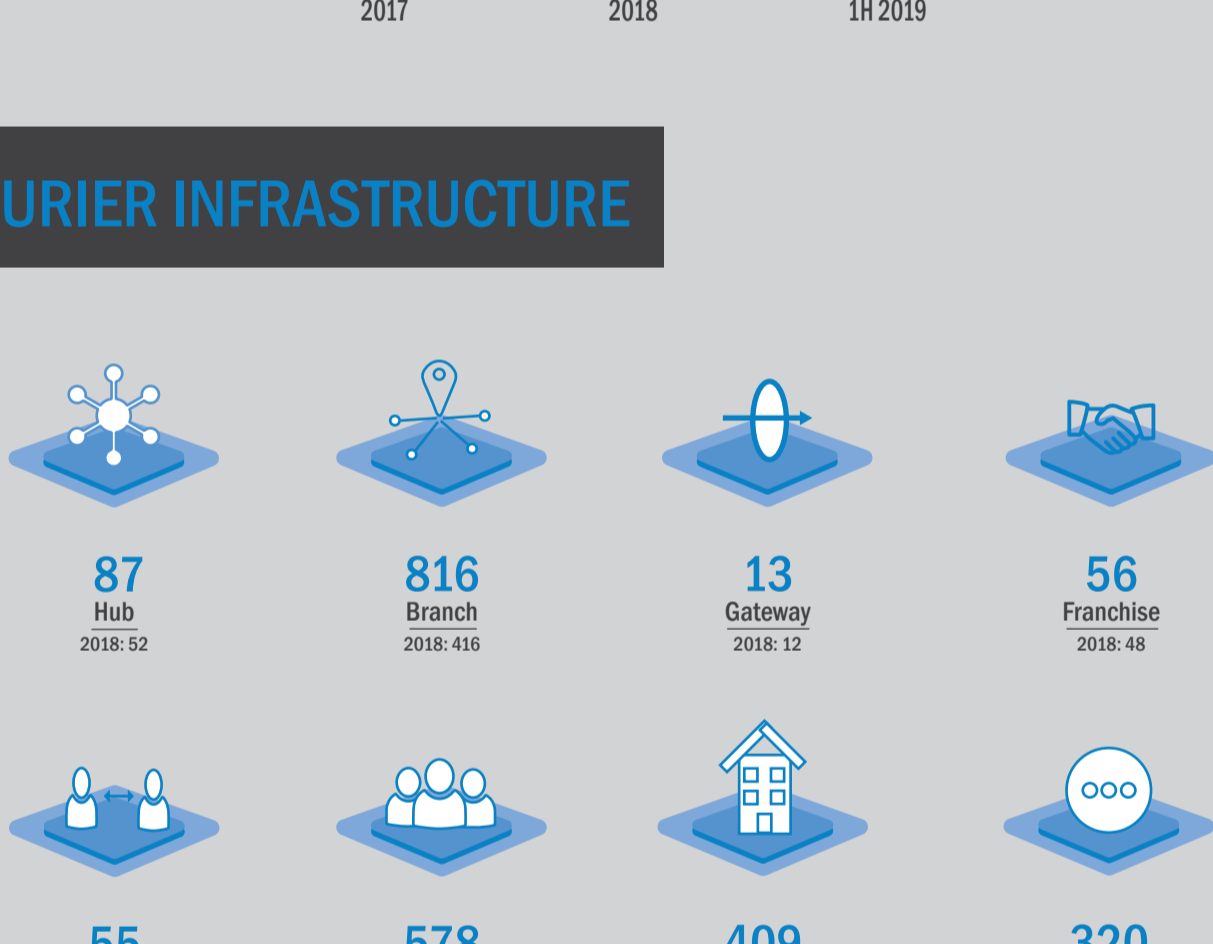
Number of letter box



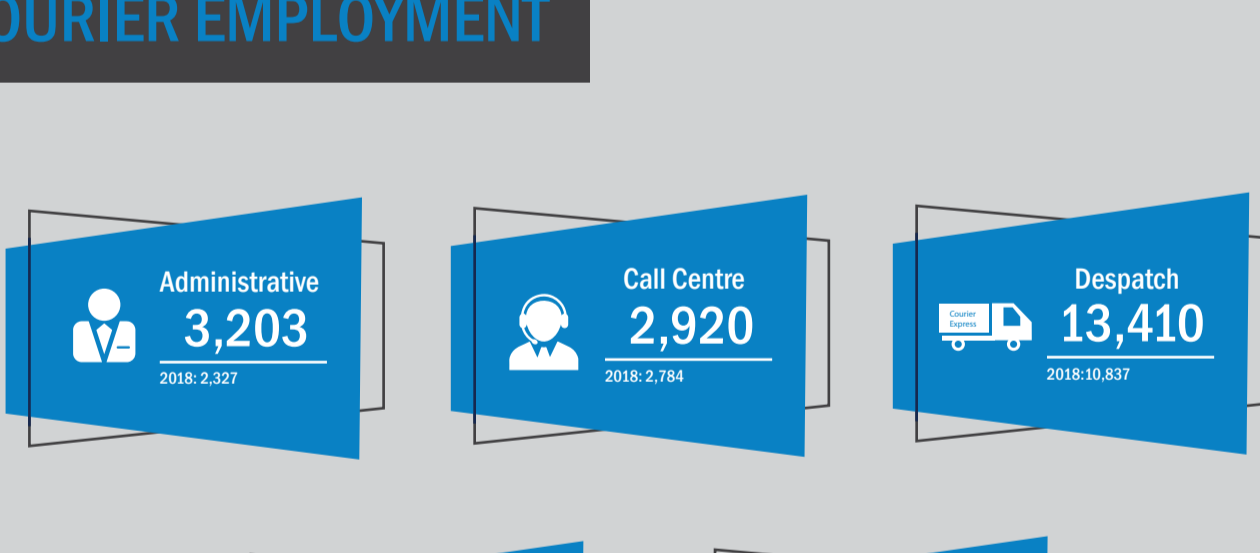
Number of automated parcel locker



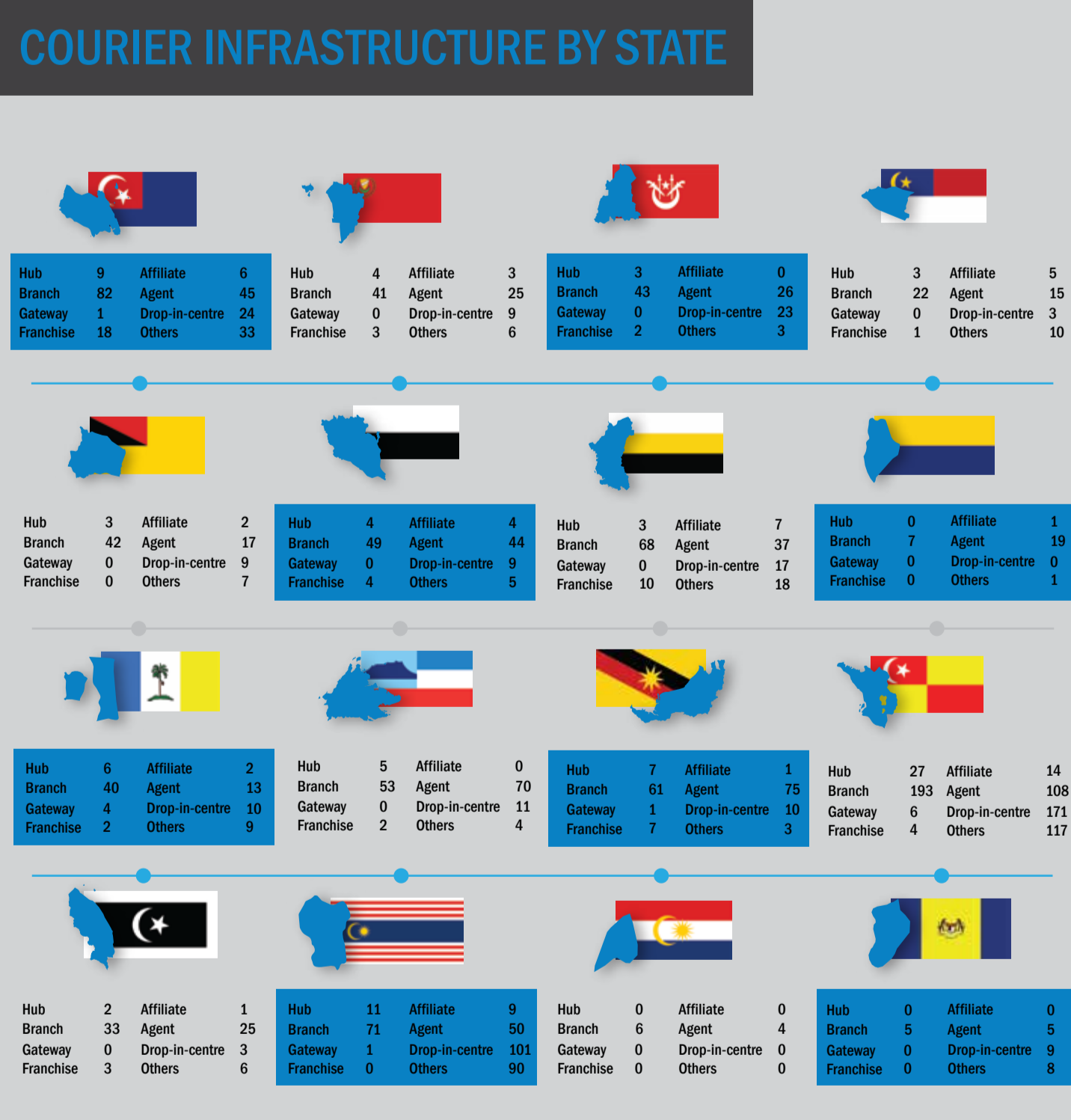
COURIER INFRASTRUCTURE



COURIER EMPLOYMENT

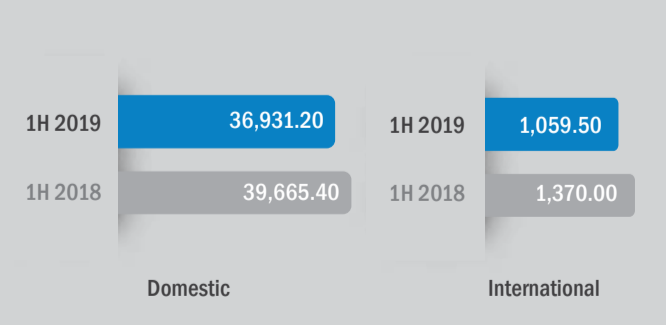


COURIER INFRASTRUCTURE BY STATE

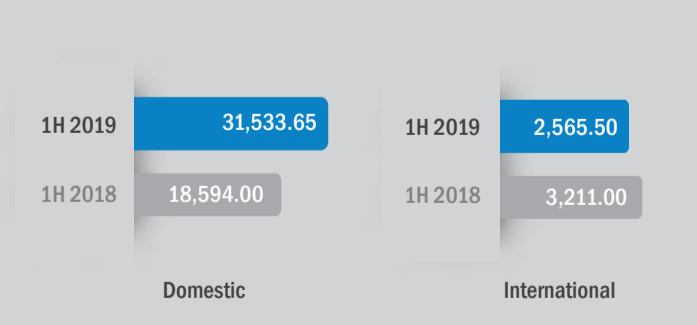


COURIER TRAFFIC

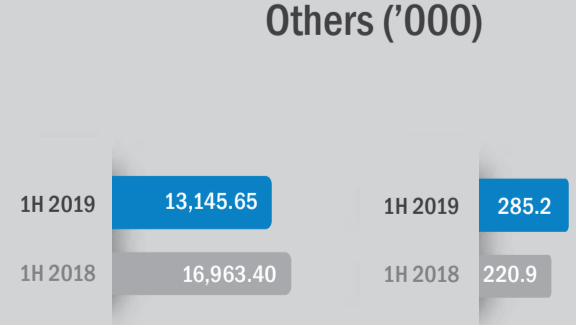
Number of document ('000)



Number of parcel ('000)



Others ('000)



COURIER VEHICLE



Note: 1. For 2019, it was collated from 16 couriers companies including Pos Laju, while 2018, data was collated from 14 courier companies. Prior to 2018, it was based on top 10 courier companies. 2. Others in Courier infrastructure includes service centre, sales, financial and customer service. 3. Others in Courier employment includes operation centre, sales, financial and customer service. 4. Others in Courier traffic includes non-priority mail, walk-in courier, prepaid and post express.